



firm qualifications

about g70

FULL SERVICE

Established in 1971, G70 is Hawai'i's largest full service multi-disciplined design firm providing integrated services for sustainable development in architecture, interior design, civil engineering, and planning & environmental services. We have specific expertise in design for resort communities, residential projects, educational and medical facilities, mixed-use commercial ventures, utilities and roadway infrastructures, and all phases of master planning for major land holdings.

CREATING VALUE

Based in Honolulu, G70 is staffed with over 100 full-time professionals, including: licensed architects, interior designers, civil engineers, planners, technical specialists, and other support personnel. The firm is on the forefront of sustainable design practices with 33 LEED (Leadership in Energy and Environmental Design) accredited professionals in all areas of service.

CULTURALLY RELEVANT

G70 is about stewardship. Our work begins with understanding our client, the host culture of each project, and the surrounding community. We work with communities to create designs that not only best serve the people, but also incorporate the cultural, historical and environmental aspects of the land.

SUSTAINABLE DESIGNS

Sustainable principles cross all disciplines in project development from planning to design, integrating land resource management and cultural heritage with cutting edge sustainable technology. G70 offers sustainable design methods and tools to plan, build, and monitor the utilities and infrastructure of a project site. We provide asset management resources to maintain, secure, and optimize operating costs for land owners and developers.

TECHNOLOGY

G70 is progressive in its use and application of design software to enhance visualization and bring efficiency to the design process. Our current list of software being utilized is:

- Revit 2018, 2020
- Dynamo Revit
- AutoCad 2018, 2020
- SketchUp Pro 8
- Photoshop
- Illustrator
- InDesign
- Rhino 5.5
- BIM 360
- Google Earth Pro
- Grasshopper Arc GIS
- Lumion 6.0
- Civil 3D 2018, 2020
- Arc GIS
- Infraworks
- Formlabs





ARCHITECTURE

G70 designs architecture that represent the lifestyles of communities and respect the natural landscape surrounding each project. Our emphasis on cultural context, honoring traditional values, combined with contemporary innovation and planning of sustainable environments creates harmonious, memorable designs for our future.



CIVIL ENGINEERING

Civil Engineering Consulting Services include the full range of services for a civil consulting firm. Our capabilities are broadened significantly with the overlapping services and abilities of G70, including Planning and Environmental Services, Land-Use Permitting, Architecture, Sustainable Development, GIS and Geospatial Services, and Asset Management.



INTERIOR DESIGN

We believe that interior spaces should have a timeless quality and compliment the architectural style of its environment. Our team includes architects specializing in interior design. We offer custom designed finishes, furniture and architectural elements that offer signature details to enhance our client's individual style.



PLANNING & ENVIRONMENT

G70 provides comprehensive services to meet the challenges in the planning of communities, regions and the preservation of land resources. We engage the community in the process, assess the land, and prepare the necessary documents to expedite the due diligence process in a timely manner.





LAND USE PERMITS & ENTITLEMENTS



ENVIRONMENTAL ASSESSMENT & EIS



MASTER PLANNING, URBAN DESIGN & DUE DILIGENCE



GIS & GEOSPATIAL ANALYSIS



NATURAL RESOURCES & DISASTER MITIGATION PLANNING



CULTURAL RESOURCES MANAGEMENT

planning & environment

planning and environment

Services Overview

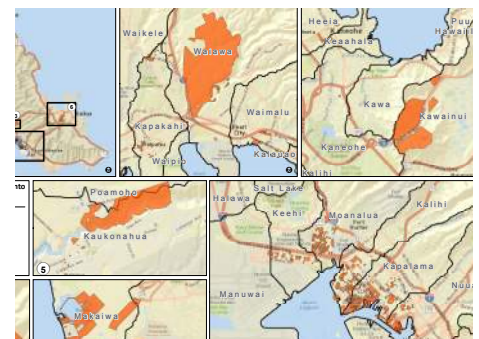
G70 provides a variety of services to meet the complex challenges of planning land resources and diverse communities with a sustainable future. Our extensive experience in all phases of the development process includes Master Planning, Community Building and Land Use Entitlements. We are staffed to manage large-scale Environmental and Physical Planning with architecture to create appealing, sustainable settings.

Our urban and environmental planners collaborate with in-house cultural experts, as well as solicit community input to incorporate historical and cultural elements in our planning process. Before proceeding with any project, we ensure that our environmental studies and land use plans are accepted by the community and the approving agencies.

G70 provides landowners and government agencies with the full range of land use permitting and entitlement services at both the State and County levels.

G70 planning services include:

- Community Master Plans
 - Resort Master Plans
 - Educational Campus Plans
 - Regional, General and Specific Plans
 - Urban Design Plan / Design Guidelines
 - Park and Open Space Plans
 - Community Involvement and Facilitation
 - Feasibility Studies and Alternatives Analysis
 - Land Use Permits
 - Development Constraints Analysis (regulatory, environmental, technical)
 - Regional and Area-wide Land Use Planning
 - Detailed Property and Site Assessments, and Due Diligence Reporting
 - Environmental Assessments and Environmental Impact Statements
 - Cultural & Historic Resource Management



planning and environment

Land Use Permitting & Entitlements

Land development in Hawai'i is complex, involving physical design elements, environmental and socioeconomic issues, many governmental regulations, as well as community participation. G70's staff has extensive experience at all levels of governmental processing; we are able to guide and coordinate all elements expeditiously, and are considered to be a leading firm in Hawai'i land use permitting, with experience on all islands, working for both public and private sector clients with all types of land use permitting.

Our Planning Team is experienced in the preparation and processing of applications for land use approvals. We have several senior planners that are former City/ County Planning Department officials, and apply their depth of knowledge and understanding to the complex process of gaining regulatory approvals in Hawai'i. Our permitting services include:

- State Land Use Boundary Amendments
- County Development Plan and Community Plan Amendments
- Change of Zone
- Conservation District Use Permits (CDUP)
- Special Management Area Permits (SMA)
- HCDA Permits
- Variances and Other County-Level Permits

Sample land use permitting projects include:

- *Hanauma Bay Nature Preserve, Hawai'i Kai, O'ahu*
- *Hiluhilu/UH West Hawai'i, Kailua-Kona, Hawai'i*
- *Kamehameha Schools Hale'iwa Store Lots, Hale'iwa, O'ahu*
- *Hilton Hawaiian Village, Waikīkī, O'ahu*
- *Kapolei Harborside Center, Kapolei, O'ahu*
- *Kīhei High School, Kīhei, Maui*
- *Kualoa Ranch and Activty Club, Kualoa, O'ahu*
- *Fairmont Kea Lani Hotel, Wailea, Maui*
- *Le Jardin Academy, Kailua, O'ahu*
- *UH Long Range Development Plan, Honolulu, O'ahu*
- *Maluhia at Wailea, Maui*
- *Princeville Resort Expansion Entitlements*
- *Kuilima Resort Expansion Master Plan*
- *Contemporary Museum, Makiki, Honolulu*
- *Pu'u Kukui Elementary School, Wailuku, Maui*
- *Ho'opili Master Plan/Zone Change/Urban Design Plan, 'Ewa Beach, O'ahu*
- *Hawai'i Baptist Academy Master Plan and CUP, Honolulu, O'ahu*
- *Westin Maui Hotel & Spa, Ka'anapali, Maui*





KALAELOA SOLAR POWER FACILITY



DOT KALAELOA HARBOR FUEL PIER MP



ASSETS SCHOOL K-4 VILLAGE



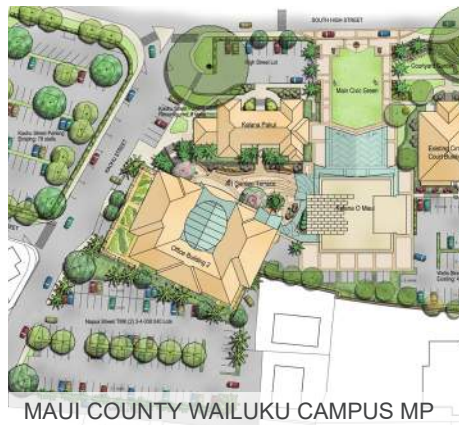
KS HALEIWA STORE LOTS

civil engineering

INTEGRATED DESIGN SERVICES

Founded in 1971, G70 is an award-winning multi-disciplinary design firm of architects, engineers, planners, interior designers, cultural practitioners and technical professionals. We endeavor to understand every project's unique vision and goals, its present and future value to the community and stakeholders, and its unique ecological and cultural context. This is foundational to all our work.

We believe every project must capture, respect and preserve the cultural heritage and unique qualities of the community to which it belongs in order to be successful built environments. Our projects are created within a cultural context through an integrated design process which recognizes that successful projects are created through consideration of multiple perspectives, collaboration, and consensus-building. We facilitate our clients' visions and dreams with experts across multiple disciplines who add exceptional value to each project while preserving the lifestyle of the surrounding community.



G70 symbolizes our commitment to design excellence. It represents a belief that we are creative designers and reflects aspirations to collaborate with clients, to imagine futures for their projects and the communities they serve.

CAPABILITIES

- Site Master Planning and Site Selection
- Infrastructure Master Planning
- Feasibility Studies and Due Diligence
- Preliminary Engineering Report (PER)
- Permitting – NPDES, UIC, Department of the Army, Water Quality Certification, SCAP
- Environmental Assessments (EA) and Environmental Impact Statements (EIS)
- Drainage and Water Quality
- Watershed and Ecosystem Management Planning
- Infrastructure Modeling
- Surface Modeling and Earthwork Analysis
- Geospatial Analysis and Mapping
- Construction Plans, Specifications and Cost Estimates
- Bid Proposals and Contract Documents
- Construction Administration and Observation
- Project Management
- Value Engineering
- Visualization Services
- Community Support and Public Involvement

PROJECT TYPES

- Land Development
- Residential Site Development
- Commercial Site Development
- Energy Systems Development
- Industrial Site Development
- Resort/Hospitality Site Development
- Transportation
- Institutional/Educational Site Development
- Wastewater
- Water Supply and Distribution
- Utility Infrastructure
- Stormwater Management
- Sustainable Design



G70 Civil Engineering services go beyond the range of the typical civil engineering consulting firm because of unique inter-disciplinary synergies. Our capabilities are broadened significantly with the overlapping of expertise and services at G70, like planning and environmental services, land-use permitting, architecture, sustainable development, GIS and geospatial services, and asset management.





relevant experience

renewable energy experience

Ho'ohana 52MW Solar Farm, Kunia

The Ho'ohana Solar project site is located in Kunia, on the island of O'ahu in the State of Hawai'i. The development plans for the project will consist of two phases. Phase I will be developed on approximately 138 acres and will provide 19.8-megawatt (MW) (AC) with battery storage with maximum power of 15 MW to the Hawai'i an Electric Company's (HECO) grid. Phase II of the project will be located on approximately 192.27 acres and the full buildout of the project will provide 52 MW (AC). G7o completed a conditional use permit and waiver permit for Phase I of the project and is assisting Ho'ohana with schematic design and the various requirements of the HECO RFP award. Additional entitlements will also be completed for Phase II of the project.

Clearway Waiawa I - 36MW Solar Farm

Clearway Waiawa I is the first phase of a solar farm located in a 200-acre easement area in Central Oahu. This facility is planned to utilize a tracker-type racking system and will include an electrical substation, battery storage and 46kV transmission line to a HECO point of connection.

G7o is currently providing land use planning and civil engineering support to Clearway to develop the design and package an RFP for EPC contractors.

Clearway Mililani I - 20MW Solar Farm

Clearway Mililani II is the second phase of a solar farm located on 354-acres of land in Mililani, O'ahu. This phase will continue to utilize tracker-type racking systems and will tie into the electrical switchyard and HECO substation that were constructed during the first phase of the solar farm.

G7o is currently providing land use planning and civil engineering support to Clearway to develop the design and package an RFP for EPC contractors

Clearway Mililani II - 12.1MW Solar Farm

Clearway Mililani II is the first phase of a solar farm located on 354-acres of land in Mililani, O'ahu. This facility utilized tracker-type racking systems and included an electrical switchyard and HECO substation within a 111-acre fenced area.

G7o provided land use planning, environmental permits, site palnning, civil engineering;; assisted with RFP preparation; and worked with the EPC contractor to optimize the design during construction.

Clearway Waipi'o - 47.6MW Solar Farm

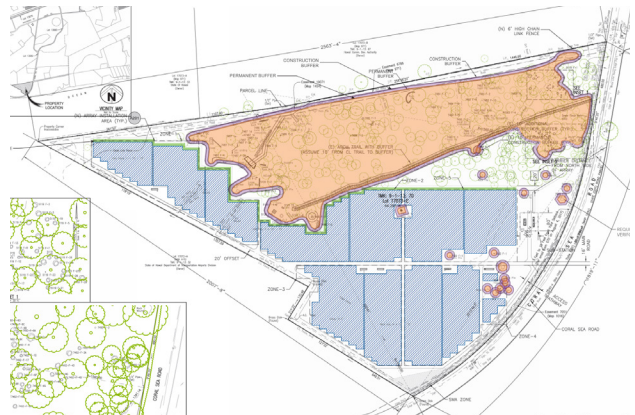
Clearway Waipio is a 47.6MW solar farm located on the ridges above H2 freeway in Waipio, O'ahu. This facility utilized tracker-type racking systems and included and electrical switchyard and HECO substation within a 309-acre fenced area.

G7o provided land use planning, environmental permits, site palnning, civil engineering, assisted with RFP preparation; and worked with the EPC contractor to optimize the design during construction.

Clearway Kawaihoa - 47.6MW Solar Farm

Clearway Kawaihoa is a 47.6MW solar farm located adjacent to the Kawaihoa Wind Farm on the north shore of O'ahu. This facility utilized tracker-type racking systems and included electrical switchyards that tie into two existing HECO substations within a 290-acre fenced area.

G7o provided land use planning, environmental permits, site planning, civil engineering, assisted with RFP preparation; and worked with the EPC contractor to optimize the design during construction.



Aloha Solar Energy Farm I/II 5MW Solar Farm, Kalaeloa

renewable energy experience

Aloha Solar Energy Farm I/II 5MW Solar Farm, Kalaeloa

ASEF II is a 5-MW utility scale solar photovoltaic system on 44-ac lease with Hawai'i Community Development Authority (HCDA) with a 1.78 mi 12 kV power line. The project supports Hawai'i Clean Energy Initiative goals and provides reliable power for the Kalaeloa Community Development District. G7o completed site planning, civil engineering, HRS 343 Environmental Assessment, HCDA Development Permit, Variance, SMA, NPDES Permit and FAA clearance.

G7o helped direct Archaeological and Cultural studies to preserve 23 sites (146 features) as traditional Hawaiian or historic military sites. Studies include Historical Site Conditions Assessment, Interim Archaeological Preservation Plan, Archaeological Monitoring Plan, Burial Treatment Plan, Cultural Ethnohistorical Study, approved by the State Historic Preservation Division (SHPD) and the O'ahu Island Burial Council in consultation with key stakeholders and cultural descendants.

Aloha Solar Energy Farm 5MW Solar Farm, Ma'ili

ASEF solar farm is a 5MW feed-in-tariff project is adjacent to the Sea Country community in Ma'ili, O'ahu. This facility utilized a fixed-tilt racking system and included an electrical substation and transmission line to a HECO point of connection.

G7o provided land use planning, environmental permits, full design and construction approvals, and assisted the owner during construction of this Design-Bid-Build project. Due to the proximity of residences, G7o worked with agencies and the community to address potential impacts of the solar farm (e.g., noise, visual, etc.).

East Kapolei Solar 7.5 MW

East Kapolei Solar, LLC is a 7.5 MW photovoltaic system planned on 30 acres located in Honouliuli. The commercial scale system is planned to interconnect with the HECO grid. G7o completed land use planning, entitlements and preliminary engineering design for the East Kapolei Solar project. A Conditional Use Permit and Zoning Waiver permit were obtained from the City and County of Honolulu. The project is located on agricultural lands with operations to include cattle grazing outside the solar array to maintain the surrounding scrub brush vegetation.

Hawaii BioEnergy – HECO Biofuels Program Development, Kaua'i and Hawai'i

G7o completed feasibility energy studies and GIS analysis for biofuel energy development including feedstock crop area identification (over 20,000 acres), transportation system routing, process facility siting alternatives, environmental impact statement, entitlement pre-assessment, and agency coordination. G7o is supporting HBE and General Atomics in planning and permitting an algae pilot project under grant funding by DARPA. The project seeks to demonstrate the commercial viability of algae oil production.

Hamakua Energy Wood Power Facility

G7o completed detailed planning studies and permitting strategy for development of a eucalyptus wood chip burning power generating facility (up to 30 MW) planned for a former sugar mill in Hamakua, Hawai'i. The selected site(s) will be used for the growing of biomass feedstock and developing processing facilities as follows: (1) Agricultural raw materials processing into biomass feedstock and (2) Converting biomass feedstock into pyrolysis oil intended for combustion at on-island power generating facilities. The project requires State and County permits and an Environmental Impact Statement.



Hawai'i BioEnergy – HECO Biofuels Program Development
Kaua'i and Hawai'i



Hamakua Energy Wood Power Facility



Phycal Algae Biofuel Pilot Project

renewable energy experience

ECC Waipio

ECC Waipio is an 11 MW solar farm located on a 43-acre project site in Waipio Peninsula. This project was constructed on Federal land and was ultimately turned over to the Federal government. This facility utilized a fixed tilt racking system that tied in to a substation by others.

G7o provided Civil Engineering services during design and construction by the EPC contractor.

Phycal Algae Biofuel Pilot Project

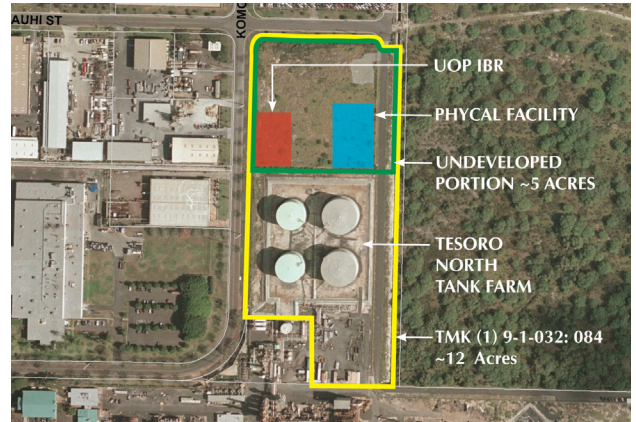
The objective of the project is to establish a biofuel processing facility on an approximately 8-acre site and aquaculture farming (algae) area on an adjacent 26-acre site located in Poamoho, Wahiawa. The Algae oil will be converted into biodiesel or derived into drop-in replacements for diesel, jet fuel and feedstock for other bioproducts. The pilot project is grant funded by the U.S. Department of Energy, thus the project was required to comply with Federal NEPA regulations. G7o assisted Phycal Hawaii with the completion of NEPA and State Environmental Assessments, and entitlements, including a Conditional Use Permit, Waiver Permit. G7o also helped with the Phase II development of the project in which the algae oil was transported to James Campbell Industrial Park for processing into biofuel products. G7o completed a separate Conditional Use Permit for this portion of the project.

Honeywell UOP Integrated Biorefinery

The objective of the IBR pilot facility is to develop a pyrolysis oil processing facility at the James Campbell Industrial Park in Kalaeloa, O'ahu. The project seeks to demonstrate the creation of a renewable fuel from the conversion of biomass. Due to Federal grant funding the UOP pilot project requires compliance with NEPA and G7o assisted Honeywell with the completion of a U.S. Department of Energy Categorical Exclusion. County land use permitting and entitlements, and various environmental permits were also prepared for the project.

DHHL Moloka'i Water System 1MW Solar Farm and Battery Storage

G7o prepared a net-zero energy feasibility assessment report for the Department of Hawaiian Home Lands for a new 1 MW PV system with battery energy storage to power an existing public water system serving DHHL homesteads and residents in Hoolehua and Kalamaula on Molokai. Energy costs on Molokai are extremely high, making the annualized net-zero PV system attractive to the DHHL. The project required a Federal, State, and County permit and Environmental Assessment / Report, done by others, but mitigation measures were incorporated into the site layout and design.



Honeywell UOP Integrated Biorefinery



resumes

TRACY CAMUSO

AICP
Principal Planner



As an environmental and land use planner, Tracy brings more than 15 years of experience working on projects ranging from renewable energy, biofuels, agricultural developments, educational facilities, industrial parks, scientific research institutions, residential communities, and resort master plans. Through her experience working on public relations and policy issues in the Office of U.S. Senator Daniel K. Inouye and the Hawai'i State Legislature, Tracy utilizes her specialized knowledge of public policy and implementation to assist in the coordination with both community and government organizations. In her new role as Principal, she will continue to work closely with G70's management team to provide sustainable and holistic solutions for the local community.

SELECTED PROJECTS:

AES Waiawa II 60MW Solar Farm

Waiawa, O'ahu

AES West Kaua'i Energy Project

Waimea, Kaua'i

Aloha Solar Energy Fund I, Lualualei

Lualualei, O'ahu

Aloha Solar Energy Fund II, Kalaeloa

Kalaeloa, O'ahu

East Kapolei Solar Farm - Environmental Studies, CUP

Kapolei, O'ahu

Hawai'i BioEnergy Kaua'i Algae Farm - Permitting Strategy, State/County Permits

Līhu'e, Kaua'i

Ho'ohana Solar Farm (52MW) - EA, CUP

Kunia, O'ahu

PAR Petroleum Expansion -

CUP, Height Variance

Kapolei, O'ahu

Phycal Algae Pilot Project -State/NEPA EA

Wahiawa, O'ahu

UOP Integrated Biorefinery - Permitting

Strategy, State/County Permits

Kalaeloa, O'ahu

Clearway Waiawa Solar (36MW) -

SLUBA, CUP, Waiver

Waiawa, O'ahu

Clearway Mililani Solar (65MW) -

CUP, Waiver

Mililani, O'ahu

LRE Mahi Solar (120 MW) -

SUP, CUP, Waiver

Kunia, O'ahu

U.S. Army Training Areas O'ahu -

Environmental Condition of Properties (ECoP)

Central, O'ahu/North Shore, O'ahu

Salvation Army Residence Facilities -

Land Use Permitting

Honolulu, O'ahu

Leihano Senior Village CCRC - CUP,

UA Status Updates

Kapolei, O'ahu

Marriott Residence Inn -

CUP Limited Service Hotel

Kapolei, O'ahu

Farrington Highway Improvements -

EA, Pre-Design

East Kapolei, O'ahu

Halekua - Royal Kunia Phase II,

PDH, Zoning Adjustment, UA

Kunia, O'ahu

Hilton Hawaiian Village Master Plan -

EIS, SMA, PDR, WSD

Honolulu, O'ahu

Ho'opili Community - Zone Change

Kapolei, O'ahu

Kapolei Haborside Center -

EIS, Zone Change

Kalaeloa, O'ahu

PROFESSIONAL REGISTRATIONS & ASSOCIATIONS:

American Planning Association (APA), Member

American Institute of Certified Planners (AICP), Member

American Red Cross, Board Member

Waikiki Improvement Association, Member

NAIOP Commercial Real Estate Development Association, Member

Urban Land Institute (ULI), Member; Urban Plan Participant

Women in Renewable Energy (WiRE), Member

Chamber of Commerce of Hawai'i, Member

Business Industry Association (BIA), Member

Hawaii Society of Business Professionals, Board Member

Patsy T. Mink Leadership Alliance Inaugural Cohort, 2016-2017

Pacific Century Fellows, Fellow 2019-2020

EDUCATION:

Masters in Public Administration

University of Hawai'i at Mānoa, HI

B. A. Political Science

University of Hawai'i at Mānoa, HI

HONORS & AWARDS:

Pacific Business News - Women Who Mean Business Awardee, 2019

Pacific Business News - Forty Under 40 Awardee, 2019

PAUL T. MATSUDA

P.E., LEED AP
Principal
Director of Civil Engineering



Paul Matsuda, P.E., LEED AP is a principal and the Director of Civil Engineering of G70. Paul has more than 29 years of civil engineering experience in a wide variety of site development, transportation and utility infrastructure projects throughout Hawai'i and the Pacific Northwest. He is responsible for management and delivery of the firm's engineering projects and is actively involved in design and project management for many of them. Paul received a Bachelor of Science degree in civil engineering from the University of Washington and is a licensed professional in Hawai'i, Oregon, and Washington.

SELECTED PROJECTS:

AES Mountain View 19.5MW Solar Farm
Wai'anae, O'ahu

AES Waiawa II 60MW Solar Farm
Waiawa, O'ahu

AES West O'ahu 18.4MW Solar Farm
Kapolei, O'ahu

AES West Kaua'i Energy Project
Waimea, Kaua'i

Innergex Paeahu 15MW Solar Farm
Ulupalakua Ranch, Maui

Innergex Hale Kuawhi 30MW Solar Farm
Parker Ranch, Hawai'i Island

Longroad Mahi 120MW Solar Farm
Kunia, O'ahu

Longroad Pulehu 40MW Solar Farm
Pulehu, Maui

Clearway Mililani 12.1MW Solar Farm Phase 1
Mililani, O'ahu

Clearway Mililani 12.1MW Solar Farm Phase 2
Mililani, O'ahu

Clearway Waipio 47.6MW Solar Farm
Waipio, O'ahu

Clearway Kawaihoa 47.6MW Solar Farm
Kawaihoa, O'ahu

Clearway Waiawa I 36MW Solar Farm
Waiawa, O'ahu

Ho'ohana 52MW Solar Farm
Kunia, O'ahu

Waipio 11MW Solar Farm
Waipio, O'ahu

ASEF Kalaeloa Solar Farm
Kalaeloa, O'ahu

East Kapolei Solar Farm
Kapolei, O'ahu

Sunetric Wai'anae Two 5MW Solar Farms Phases I & II (FIT & PPA)
Wai'anae, O'ahu

Sunetric Residential Solar, Farrington - Permitting
Wai'anae, O'ahu

Sunetric Residential Solar, Mahinaau - Permitting
Wai'anae, O'ahu

Hawai'i BioEnergy - HECO Biofuels Program Development
Kaua'i and Hawai'i

University of Hawai'i at Mānoa - Photovoltaic Power Plant Master Plan
Honolulu, O'ahu

PROFESSIONAL REGISTRATIONS & ASSOCIATIONS:

State of Hawai'i – Professional Engineer (P.E.) Civil #10901

State of Oregon – Professional Engineer (P.E.) Civil #19,250

State of Washington – Professional Engineer (P.E.) Civil #35,943

U.S. Green Building Council (USGBC) – Leadership in Energy and Environmental Design Accredited Professional (LEED AP)

U.S. Green Building Council, Hawai'i Chapter

American Society of Civil Engineers (ASCEH), Member

American Council of Engineering Companies Hawai'i (ACECH), Member

American Water Works Association (AWWA), Member

EDUCATION:

B.S. Civil Engineering
University of Washington, WA

JEFFREY H. OVERTON

AICP, LEED AP
Principal Planner



As Principal Planner, Mr. Overton leads the preparation of Master Plans, environmental impact documents, land use permitting, and community involvement for private developments, military installations, and government projects. His experience spans over 33 years of Environmental Impact Statements and permitting for residential communities, infrastructure and utilities, renewable energy projects, government facilities, scientific installations, schools, resorts, commercial/mixed-use centers, and recreational facilities. Mr. Overton directs community and area-wide Master Plans, site selection studies and urban design plans, and provides expert testimony before State and County land use authorities.

SELECTED PROJECTS:

Ho'ohana 52 MW Solar Farm

Kunia, O'ahu

Clearway Waiawa I 36 MW Solar Farm

Waiawa, O'ahu

Clearway Mililani 12.1 MW Solar Farm

Mililani, O'ahu

Clearway Kawaiiloa 47.6MW Solar Farm

Kawaiiloa, O'ahu

East Kapolei Solar (5 Mw) - Environmental Studies, Permits East

Kapolei, O'ahu

Aloha Solar Energy Farm II - EA, HCDA Permit

Kalaeloa, O'ahu

Phycal Algae Biofuel Pilot Project - EA NEPA, Permit

Wahiawa, O'ahu

Hawaii BioEnergy Kauai Algae Farm - Permitting Strategy

Līhu'e, Kaua'i

Coconut Plantation Village - SMA, PDU, Zone Change

Kapa'a, Kaua'i

DTS Pearl Ridge Bus TOD - EA, Permits

Aiea, Oahu

Hale'iwa Commercial - Zone Change, EA

Hale'iwa, O'ahu

Hawai'i State Judiciary - Statewide Facilities Master Plan

State of Hawai'i

Hilo Judiciary Complex - Site Selection, EIS

Hilo, Hawai'i

Hilton Hawaiian Village Expansion - Master Plan EIS, SMA Permit, PDR,WSD

Waikiki, O'ahu

Ho'opili Community - Master Plan, Zone Change, Urban Design Plan

Kapolei, O'ahu

Kahala Ave. (4607) Residential - EA, SMA

Kahala, O'ahu

Kalaeloa Barbers Point Harbor - 2040 Master Plan, Fuel Pier Design, EIS

Kalaeloa, O'ahu

Kamakana Villages at Keahuolu - Master Plan, EA, Permits

Kona, Hawai'i

Kamehameha Schools Kapālana - Strategic Master Plan

Kapālana, O'ahu

Kamehameha Schools Kohou TOD Residential Development

Honolulu, O'ahu

Kamehameha Schools - North Shore Master Plan

North Shore, O'ahu

Kalia- Fort DeRussy Wastewater Improvements - EA (NEPA), Permits

Waikiki, O'ahu

Kapolei Harborside Center - Master Plan, EIS, State Land Use, Zone Change

Kalaeloa, O'ahu

PROFESSIONAL REGISTRATIONS & ASSOCIATIONS:

American Institute of
Certified Planners (AICP)

Urban Land Institute - Hawai'i Chapter

O'ahu Economic Development Board, Chair

US Green Building Council, LEED AP

EDUCATION:

M. S. Marine Environmental Science
State University of New York, NY

B. S. Zoology/Biology Oceanography
Duke University, NC

PROJECT HONORS & AWARDS:

**Hale'iwa Store Lots - APA Hawai'i
Environment/Preservation Award,**
2015

**Kamakana Villages at Keahuolu - APA
Hawai'i Chapter Outstanding Planning
Award,**
2011

**Kamehameha Schools North Shore Plan -
APA National Planning Excellence Award,**
2008

**Waiialua Town Master Plan - APA Hawai'i
Chapter Community-based Planning Award,**
2005

**Mauna Kea Science Reserve Master Plan -
APA Hawai'i Chapter Outstanding Planning
Award,**
2000

MARK KĀWIKĀ MCKEAGUE

AICP
Principal Planner
Director of Cultural Planning



Kāwika's background, experience, and passion provides a unique and knowledgeable approach to land use planning and cultural resource management. Kāwika effectively administers and advocates a Native Hawaiian perspective in environmental and land use planning, and architectural design and space programming. He brings over 20 years of experience in facilitating local and national level planning efforts for private, public, and non-profit sector clients. His work includes the preparation of Master Plans, Cultural Resource Management Programs, Environmental Impact Studies, and facilitating community dialogue.

SELECTED PROJECTS:

AES West Kaua'i Energy Project
Waimea, Kaua'i

Aloha Solar Energy Fund I
Lualualei, O'ahu

Aloha Solar Energy Fund II
Kalaheo, O'ahu

Bishop Museum - Hōkūli'a Archaeological Review, Cultural Consultation and Policy Development
Kona Coast, Hawai'i

Board of Water Supply - Hai'iku Stairs
Kāne'ohe, O'ahu

Department of Hawaiian Home Lands - Anahola Kuleana Homestead Settlement Plan
Anahola, Kaua'i

Department of Hawaiian Home Lands - Pu'u 'Ōpae Settlement Plan, EA
Waimea, Kaua'i

Department of Hawaiian Home Lands - Moloka'i Island Plan
Island of Moloka'i

Department of Hawaiian Home Lands - Wai'anae Coast Emergency Access Road/ Parallel Secondary Access Road
Wai'anae, O'ahu

Kālia Fort DeRussy Wastewater Systems Improvement
Honolulu, O'ahu

Kalaupapa Memorial Conceptual Design
Kalaupapa, Moloka'i

Kalāhuipua'a Fishpond - Environmental & Cultural Restoration Plan Due Diligence
Puowaina, O'ahu

Kamehameha Schools - Cultural Resource Management Plan
State of Hawai'i

Kamehameha Schools - North Shore Plan
Island of O'ahu

Kamehameha Schools - Natural Resource Management Plan Update
State of Hawai'i

Kamehameha Schools - Keauhou Bay Management Plan
Keauhou, Hawai'i

Pelekane Bay - EA, Ecological Restoration Assessment
North Kohala, Hawai'i

Pu'u'honua o Wai'anae Master Plan, Conditional Use Permit
Wai'anae, O'ahu

University of Hawai'i at Mānoa - Hawai'i Institute of Marine Biology (Coconut Island), Master Plan, LRDP, EIS, CIA
Kāne'ohe, O'ahu

Wailea Beach Marriott - Cultural Visioning, Art Commissioning
Wailea, Maui

Waialua Town Master Plan
Waialua, O'ahu

U of N Bencorp - CIA
Kona, Hawai'i

PROFESSIONAL REGISTRATIONS & ASSOCIATIONS:

American Institute of Certified Planners (AICP), Member

American Planning Association (APA), Member

Omidyar Fellow, 2019-2020

Lamda Alpha International Aloha Chapter, Member

Historic Hawaii Foundation, Board of Trustees

PA'I Foundation, Board Directors, 2001-2003; President, 2003-Present

Native Hawaiian Chamber of Commerce, Member

O'ahu Island Burial Council, Chair; Vice-Chair; 'Ewa Moku Representative, 2005-2012

Hulu Mamo Hawaiian Civic Club, 2012-2013

EDUCATION:

NAGPRA, ARPA Application & Requirement National Preservation Institute

Hawai'i State Foundation on Culture and the Arts, Folk and Traditional Arts Apprentice Program
Cyril Lani Pahinui

Section 106: A Review for Experienced Practitioners
National Preservation Institute

Consultation and Protection of Native American Sacred Lands
National Preservation Institute

Master of Urban and Regional Planning
University of Hawai'i at Mānoa, HI

Historic Preservation Graduate Certificate
University of Hawai'i at Mānoa, HI

Identification & Management of Traditional Cultural Places
National Preservation Institute

B.A. Political Science
University of Hawai'i at Mānoa, HI

FEMA Certified HURRIPLAN Resilient Building Design Coursework
National Disaster Preparedness Training Center

DeVos Institute of Arts Management at the Kennedy Center for Performing Arts

Leveraging Investments in Creativity Artography Cohort



111 S. King Street, Suite 170
Honoulu, HI 96813
808 523 5866
g70.design