



KALAELOA SOLAR POWER FACILITY



DOT KALAELOA HARBOR FUEL PIER MP



ASSETS SCHOOL K-4 VILLAGE



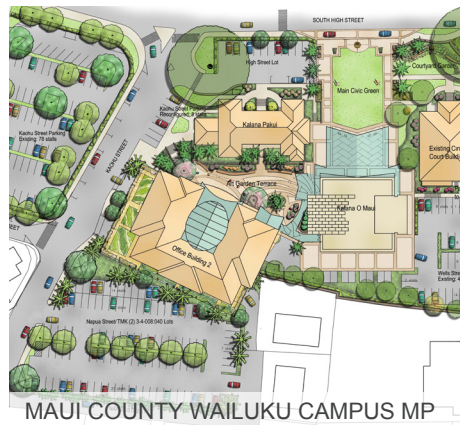
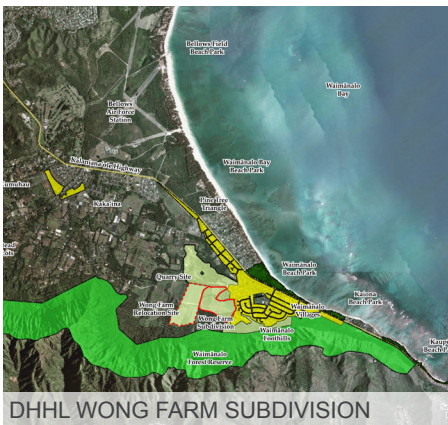
KS HALEIWA STORE LOTS

*civil engineering*

## INTEGRATED DESIGN SERVICES

Founded in 1971, G70 is an award-winning multi-disciplinary design firm of architects, engineers, planners, interior designers, cultural practitioners and technical professionals. We endeavor to understand every project's unique vision and goals, its present and future value to the community and stakeholders, and its unique ecological and cultural context. This is foundational to all our work.

We believe every project must capture, respect and preserve the cultural heritage and unique qualities of the community to which it belongs in order to be successful built environments. Our projects are created within a cultural context through an integrated design process which recognizes that successful projects are created through consideration of multiple perspectives, collaboration, and consensus-building. We facilitate our clients' visions and dreams with experts across multiple disciplines who add exceptional value to each project while preserving the lifestyle of the surrounding community.



*G70 symbolizes our commitment to design excellence. It represents a belief that we are creative designers and reflects aspirations to collaborate with clients, to imagine futures for their projects and the communities they serve.*

### CAPABILITIES

- Site Master Planning and Site Selection
- Infrastructure Master Planning
- Feasibility Studies and Due Diligence
- Preliminary Engineering Report (PER)
- Permitting – NPDES, UIC, Department of the Army, Water Quality Certification, SCAP
- Environmental Assessments (EA) and Environmental Impact Statements (EIS)
- Drainage and Water Quality
- Watershed and Ecosystem Management Planning
- Infrastructure Modeling
- Surface Modeling and Earthwork Analysis
- Geospatial Analysis and Mapping
- Construction Plans, Specifications and Cost Estimates
- Bid Proposals and Contract Documents
- Construction Administration and Observation
- Project Management
- Value Engineering
- Visualization Services
- Community Support and Public Involvement

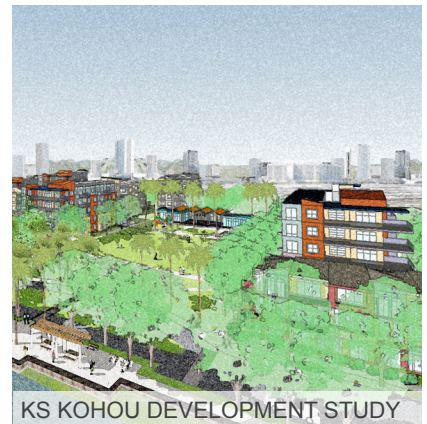


## PROJECT TYPES

- Land Development
- Residential Site Development
- Commercial Site Development
- Energy Systems Development
- Industrial Site Development
- Resort/Hospitality Site Development
- Transportation
- Institutional/Educational Site Development
- Wastewater
- Water Supply and Distribution
- Utility Infrastructure
- Stormwater Management
- Sustainable Design



*G70 Civil Engineering services go beyond the range of the typical civil engineering consulting firm because of unique inter-disciplinary synergies. Our capabilities are broadened significantly with the overlapping of expertise and services at G70, like planning and environmental services, land-use permitting, architecture, sustainable development, GIS and geospatial services, and asset management.*



## CIVIL ENGINEERING PROJECT EXPERIENCE

### City & County of Honolulu

- Farrington Highway Widening, Kapolei, O'ahu
- HFD Regional Fire Training Center, Honolulu, O'ahu
- HART Dillingham Kaka'ako Station Group
- Street Sign Inventory Database, Honolulu, O'ahu
- Affordable Housing Due Diligence and Design, O'ahu
- NPDES Storm Water Public Education and Outreach

### County of Kauai

- Impact Fee Needs Assessment

### County of Maui

- Kalana O Maui Campus Expansion - Phase 1A Office Bldg.
- Wailuku Campus Master Plan, Wailuku, Maui

### Department of Accounting and General Services

- Hawai'i Film Studio Phase I & II, Honolulu, O'ahu
- Kekuanao'a Renovation, Honolulu, O'ahu

### Department of Hawaiian Home Lands

- Ka'u Water Assessment, Ka'u, Hawai'i
- Kanakaloloa Cemetery, Moloka'i
- Lualualei Homestead Subdivision and Stream Study, Lualualei, O'ahu
- Wong Farm Subdivision, Waimanalo, O'ahu
- Waimea Nui, Waimea, Hawai'i
- Moloka'i Water Systems Improvements - Construction Management, Moloka'i
- Moloka'i Ho'olehua Water Systems Improvement - Flood Reconnaissance, Moloka'i

### Department of Transportation

- Kalaeloa Harbor - EIS, Kalaeloa, O'ahu
- Kalaeloa Harbor - Master Plan, Kalaeloa, O'ahu

### Department of Education

- Kihei High School, Kihei, Maui
- Wai'anae Elementary School - New Administration Building, Wai'anae, O'ahu
- Campbell High School Bldgs, 'Ewa, O'ahu

### Office of Hawaiian Affairs

- Kaka'ako Makai Master Plan, Honolulu, O'ahu
- 4531 Kuamo'o Road Infrastructure Assessment, Kapa'a, Kaua'i

### University of Hawai'i at Mānoa

- Student Housing Study, Honolulu, O'ahu
- College of Education Water System Improvements, Honolulu, O'ahu
- Richardson School of Law Outreach Center, Honolulu, O'ahu

- Webster Hall, Honolulu, O'ahu
- Lide Sciences Buidling, Honolulu, O'ahu

### Kamehameha Schools

- Hale'iwa Store Lots, Hale'iwa, O'ahu
- Hale'iwa Rural Village Drainage Master Plan, Hale'iwa
- Kapaeha Cultural Learning Project, Hale'iwa, O'ahu
- Kawaihoa Agribusiness Center Master Plan, Kawaihoa
- Kohou Infrastructure Evaluation, Honolulu, O'ahu
- Palama Uka Camp Master Plan, Honolulu, O'ahu

### Hawai'i BioEnergy

- HECO Biofuels Program Development, Kaua'i and Hawai'i

### Hawai'i Dairy Farms

- Construction Plans, Environmental Assessment, Water Management Plan, Maha'ulepu, Kaua'i

### ASEF 5 MW Solar Farm, Kalaeloa, O'ahu

### Sunetric 5 MW Solar Farm, Ma'ili, O'ahu

### SunEdison

- Mililani 35 MW Solar Farm, Mililani, O'ahu
- Waipi'o 47 MW Solar Farm, Waipi'o, O'ahu
- Waiawa 50 MW Solar Farm, Waiawa, O'ahu

### East Kapolei 5 MW Solar Farm, Kapolei, O'ahu

### Armstrong Builders - Multi-family Residential, Makali'i, Maui

### Kōloa Landing at Pō'ipu Beach - Multifamily Residential, Koloa, Kaua'i

### Pohai Nani Senior Care, Kāne'ohe, O'ahu

### Huapala Senior Care, Honolulu, O'ahu

### Waialua Subdivision, Waialua, O'ahu

### Kupu - Kaka'ako Green Job Training Center, Honolulu, O'ahu

### Girl Scouts of Hawai'i

- Paumalu Camp Master Plan, North Shore, O'ahu
- Wastewater Assessment & EPA Compliance, North Shore, O'ahu

### Special Olympics Hawai'i, Kapolei, O'ahu

### Kaiser Permanente - Ko'olau Clinic, Kane'ohe, O'ahu

### St. Francis Medical Center East - Master Plan, Honolulu, O'ahu

### Castle Medical Center Planning, Kāne'ohe, O'ahu

### New Hope Leeward - Kunia Campus, Waipahu, O'ahu

### New Hope Central O'ahu - Mililani Mauka Campus, Mililani, O'ahu

### Roman Catholic Church

- Diocesan Services Facility Planning, Honolulu, O'ahu
- St. Jude's Due Diligence, Kapolei, O'ahu
- St. Stephen's Civil Engineering Assessment, Honolulu, O'ahu

### Fairmont Kea Lani - Pool Fountain and Palm Court Renovations, Kihei, Maui

### Hyatt Place Waikiki - Ocean Resort Hotel Renovation, Waikiki, O'ahu

### Hyatt Centric Waikiki Beach, Honolulu, O'ahu

### Hoakalei Resort - Master Plan, 'Ewa, Oahu

### Embassy Suites Kapolei, Kapolei, O'ahu

### Four Season Ihilani Resort, Kapolei, O'ahu

### Marriott Wailea Beach, Wailea, Maui

### Marriott Residence Inn, Kapolei, O'ahu

### Gentry Pacific Design Center - Due Diligence, Honolulu, O'ahu

### Hawai'i Kai Town Center - Due Diligence, Honolulu, O'ahu

### US Army Corps of Engineers

- Lualualei Flood Study, Lualualei, O'ahu
- West Maui Watershed Study, Honolulu, O'ahu

### Navy Marine Golf Cart Facility, Honolulu, O'ahu

### Kaua'i Community Federal Credit Union, Lihu'e, Kaua'i

### First Hawaiian Bank

- Manoa Branch, Honolulu, O'ahu
- Pearlridge, Aiea, O'ahu

### Kaimuki Christian School, Honolulu, O'ahu

### Assets School, Honolulu, O'ahu

### Mid-Pacific Master Planning, Honolulu, O'ahu

### Hawai'i Pacific University, Honolulu, O'ahu

### 'Iolani School Residence Hall, Honolulu, O'ahu

### 'Iolani School K-1, Honolulu, O'ahu

### Nu'uuanu YMCA - Honolulu, O'ahu

### Shops at Anahulu, Hale'iwa, O'ahu



111 S. King Street, Suite 170  
Honolulu, HI 96813  
(808) 523-5866